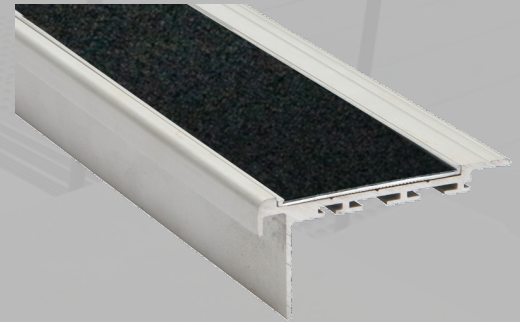




ClearTread Stair Nosing

Abrasive Insert Series (1CT10CP)

ClearTread quality aluminium stair nosings are specially designed manufactured with durable material which is ideal for use on exposed stair ways and high traffic areas. our wide range of nosings offer a solution for every requirement.



Specifications	
Product	ClearTread Abrasive Insert - Carpet
Product Code	1CT10CP
Material	Alloy: 6060, Temper: T5
Overall Dimensions	75mm x 35mm
Warranty	5 Years
Slip Rating	P5
Compliance Code	AS/NZS1428.4.1:2009, BCA 2014
Fixing Method	Various

Standard Finishes & Inserts

Finish (Anodised)



Clear



Gold



Black

Inserts (Carborundum Tape)



Black
1CT10CPAB



Grey
1CT10CPAG



Yellow
1CT10CPAY

Specification Instructions

Copy the prewritten specification below and update all sections in brackets to create your project specification.

Description

Clearview stair nosing profile in code:

'add insert code here'

Finish: 'add finish here'

To be installed to the manufacturer's instructions in accordance to the AS/NZS 1428.14.2009.

Manufacturer

Clearview Tactiles

P: 1300 884 948

E: sales@clearviewtactiles.com.au



www.clearviewtactiles.com.au

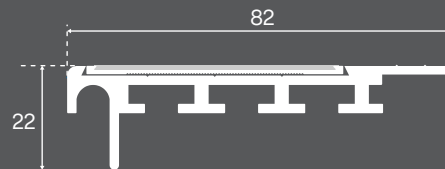


sales@clearviewtactiles.com.au



1300 884 948

Profile



Installation Guide

