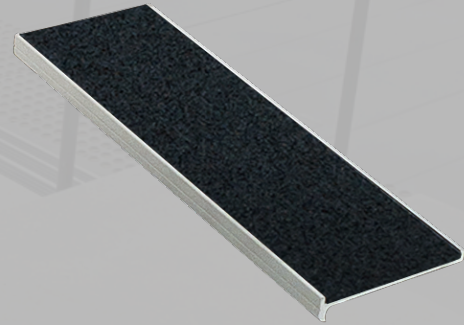


Stainless Stair Nosing

Abrasive Insert Series (1CT10FL)

ClearTread quality aluminium stair nosings are specially designed manufactured with durable material which is ideal for use on exposed stair ways and high traffic areas. our wide range of nosings offer a solution for every requirement.



Specifications	
Product	ClearTread Abrasive Insert - Flush
Product Code	1CT10FL
Material	Alloy: 6060, Temper: T5
Overall Dimensions	58mm x 10mm
Warranty	5 Years
Slip Rating	P4
Compliance Code	AS/NZS1428.4.1:2009, BCA 2014
Fixing Method	Various

Standard Finishes & Inserts

Finish (Anodised)



Clear



Gold



Black

Inserts (Carborundum Tape)



Black

1CT10FLAB



Grey

1CT10FLAG



Yellow

1CT10FLAY

Specification Instructions

Copy the prewritten specification below and update all sections in brackets to create your project specification.

Description

Clearview stair nosing profile in code:

'add insert code here'

Finish: 'add finish here'

To be installed to the manufacturer's instructions in accordance to the AS/NZS 1428.14.2009.

Manufacturer

Clearview Tactiles

P: 1300 884 948

E: sales@clearviewtactiles.com.au



www.clearviewtactiles.com.au

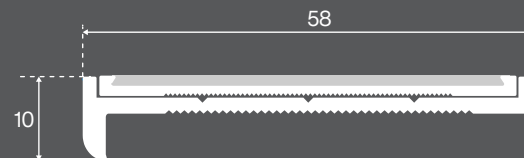


sales@clearviewtactiles.com.au



1300 884 948

Profile



Installation Guide

