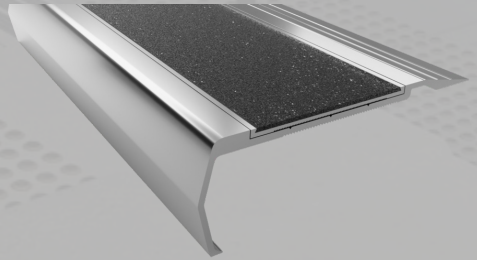




# ClearTread Stair Nosing

## Abrasive Insert Series (1C35)



ClearTread 1CT Series Nosing are ideal for a broad range of applications from architectural fitouts to form and function. Made from superior strength T6060 alloy coupled with a premium heavy duty molded polyurethane abrasive insert will work perfectly in low and high traffic areas both internally and externally.

Specifications	
Product	ClearTread Abrasive Insert
Product Code	1C35
Profile Material	Alloy: 6060, Temper: T5
Insert Material	Molded Polyurethane Abrasive Insert – Heavy Duty, External Grade
Overall Dimensions	85mm x 35mm
Warranty	4 Years
Slip Rating	P5
Compliance Code	AS/NZS 1428.4:2009, BCA 2014
Fixing Method	Various

### Standard Finishes & Inserts

#### Profile Finish



Mill



Black



Gold

#### Insert Finish



Black  
1C35AB



Grey  
1C35AG



Yellow  
1C35AY

### Specification Instructions

Copy the prewritten specification below and update all sections in brackets to create your project specification.

#### Description

Clearview stair nosing profile in code:

'[add insert code here](#)'

Finish: '[add Finish Code here](#)'

To be installed to manufacturers instructions in accordance to the AS/NZS 1428.14:2009

#### Manufacturer

Clearview Tactiles

P: 1300 884 948

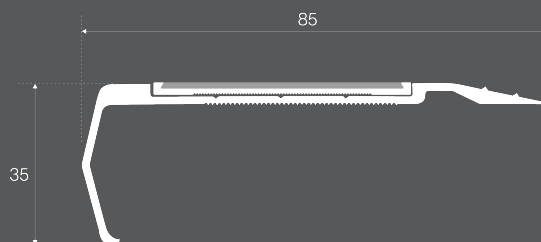
E: [sales@clearviewtactiles.com.au](mailto:sales@clearviewtactiles.com.au)

 1300 884 948

 [www.clearviewtactiles.com.au](http://www.clearviewtactiles.com.au)

 [sales@clearviewtactiles.com.au](mailto:sales@clearviewtactiles.com.au)

### Profile



### Installation Guide

