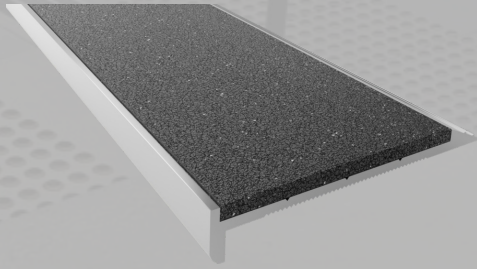




ClearTread Stair Nosing

Abrasive Insert Series (1CT10)

ClearTread 1CT Series Nosing are ideal for a broad range of applications from architectural fitouts to form and function. Made from superior strength T6060 alloy coupled with a premium heavy duty molded polyurethane abrasive insert will work perfectly in low and high traffic areas both internally and externally.



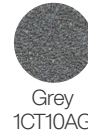
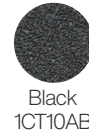
Specifications	
Product	ClearTread Abrasive Insert
Product Code	1CT10
Profile Material	Alloy: 6060, Temper: T5
Insert Material	Molded Polyurethane Abrasive Insert – Heavy Duty, External Grade
Overall Dimensions	66mm x 10mm
Warranty	4 Years
Slip Rating	P5
Compliance Code	AS/NZS 1428.4:2009, BCA 2014
Fixing Method	Various

Standard Finishes & Inserts

Profile Finish



Insert Finish



Specification Instructions

Copy the prewritten specification below and update all sections in brackets to create your project specification.

Description

Clearview stair nosing profile in code: ['add insert code here'](#)
Finish: ['add Finish Code here'](#)
To be installed to manufacturers instructions in accordance to the AS/NZS 1428.14:2009

Manufacturer

Clearview Tactiles
P: 1300 884 948
E: sales@clearviewtactiles.com.au

1300 884 948

www.clearviewtactiles.com.au

sales@clearviewtactiles.com.au

Profile



Installation Guide

