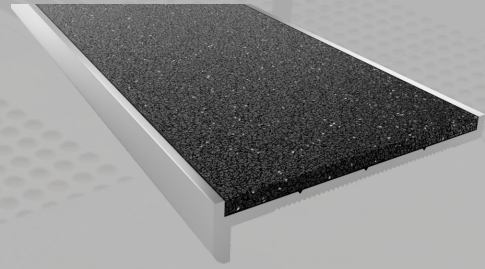




ClearTread Stair Nosing

Abrasive Insert Series (1CT10FM)

ClearTread 1CT Series Nosing are ideal for a broad range of applications from architectural fitouts to form and function. Made from superior strength T6060 alloy coupled with a premium heavy duty molded polyurethane abrasive insert will work perfectly in low and high traffic areas both internally and externally.



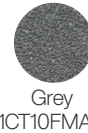
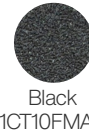
Specifications	
Product	ClearTread Abrasive Insert - Flush Mount
Product Code	1CT10FM
Profile Material	Alloy: 6060, Temper: T5
Insert Material	Moulded Polyurethane Abrasive Insert - Heavy Duty, External Grade
Overall Dimensions	58mm x 10mm
Warranty	4 Years
Slip Rating	P5
Compliance Code	AS/NZS 1428.4:2009, BCA 2014
Fixing Method	Various

Standard Finishes & Inserts

Profile Finish



Insert Finish



Specification Instructions

Copy the prewritten specification below and update all sections in brackets to create your project specification.

Description

Clearview stair nosing profile in code: ['add insert code here'](#)
Finish: ['add Finish Code here'](#)
To be installed to manufacturers instructions in accordance to the AS/NZS 1428.14:2009

Manufacturer

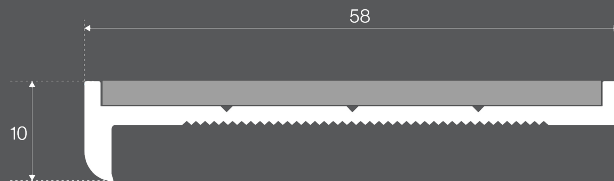
Clearview Tactiles
P: 1300 884 948
E: sales@clearviewtactiles.com.au

1300 884 948

www.clearviewtactiles.com.au

sales@clearviewtactiles.com.au

Profile



Installation Guide

