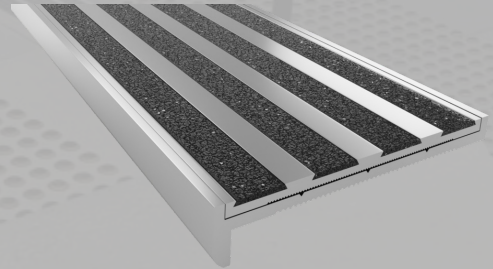




ClearTread Stair Nosing

Carborundum Insert Series (4C10FM)

ClearTread quality aluminium stair nosings are specially designed manufactured with durable material which is ideal for use on exposed stair ways and high traffic areas. Used for airports, educational institutes, health care, shopping plazas and public domains, our wide range of nosings offer a solution for every requirement.



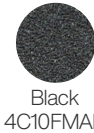
Specifications	
Product	ClearTread Carborundum Insert - Flush Mount
Product Code	4C10FM
Profile Material	Alloy: 6060, Temper: T5
Insert Material	Solid Epoxy Based Carborundum – Heavy Duty, External Grade
Overall Dimensions	58mm x 10mm
Warranty	4 Years
Slip Rating	P5
Compliance Code	AS/NZS 1428.4:2009, BCA 2014
Fixing Method	Various

Standard Finishes & Inserts

Profile Finish



Insert Finish



Specification Instructions

Copy the prewritten specification below and update all sections in brackets to create your project specification.

Description

Clearview stair nosing profile in code: ['add insert code here'](#)
Finish: ['add Finish Code here'](#)
To be installed to manufacturers instructions in accordance to the AS/NZS 1428.14:2009

Manufacturer

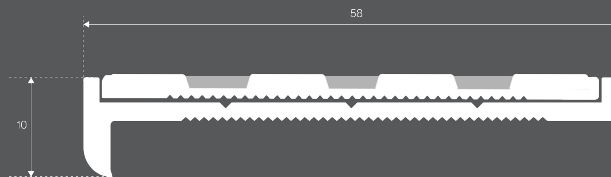
Clearview Tactiles
P: 1300 884 948
E: sales@clearviewtactiles.com.au

1300 884 948

www.clearviewtactiles.com.au

sales@clearviewtactiles.com.au

Profile



Installation Guide

