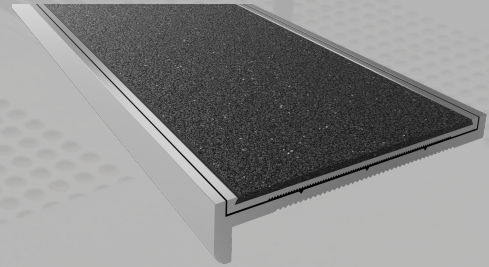


ClearTread Stair Nosing

Carborundum Insert Series (1C10FM)

ClearTread 1C Series Nosing are ideal for a broad range of applications from architectural fitouts to form and function. Made from superior strength T6060 alloy coupled with a premium heavy duty solid epoxy based carborundum insert will work perfectly in low and high traffic areas both internally and externally.



Specifications	
Product	ClearTread Carborundum Insert - Flush Mount
Product Code	1C10FM
Profile Material	Alloy: 6060, Temper: T5
Insert Material	Solid Epoxy Based Carborundum - Heavy Duty, External Grade
Overall Dimensions	58mm x 10mm
Warranty	4 Years
Slip Rating	P5
Compliance Code	AS/NZS 1428.4:2009, BCA 2014
Fixing Method	Various

Standard Finishes & Inserts

Profile Finish



Mill



Black



Gold

Insert Finish



Black
1C10FMCB



Grey
1C10FMCG



Yellow
1C10FMCY

Specification Instructions

Copy the prewritten specification below and update all sections in brackets to create your project specification.

Description

Clearview stair nosing profile in code:

'[add insert code here](#)'

Finish: '[add Finish Code here](#)'

To be installed to manufacturers instructions in accordance to the AS/NZS 1428.4:2009

Manufacturer

Clearview Tactiles

P: 1300 884 948

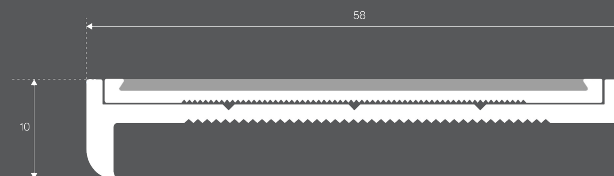
E: sales@clearviewtactiles.com.au

 1300 884 948

 www.clearviewtactiles.com.au

 sales@clearviewtactiles.com.au

Profile



Installation Guide

