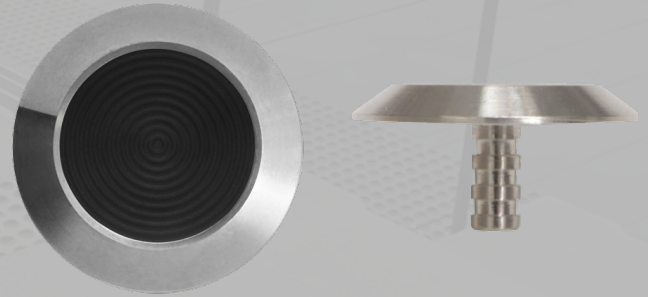


# Stainless Steel Stud

## Classic Polyring (CSSPR)

Clearview Tactiles Stainless Steel tactile indicators are manufactured from a solid piece of 316 marine grade stainless steel. This solid one piece design reduces the likelihood of shaft dislocation under stress making it far superior in strength over inferior two piece products where the shaft is welded to the base of the tactile



Specifications	
Product	Classic Polyring
Product Code	CSSPR
Material	Solid 316 Stainless Steel
Overall Dimensions	35mm (Dia) x 5mm (H)
Warranty	10 Years
Slip Rating	P5 (Highest)
Compliance Code	AS/NZS1428.4.1:2009, BCA 2014
Fixing Method	Adhesive

### Standard Finishes & Inserts

#### Finish



Stainless Steel

#### Inserts (PVC)



Black  
CSSPRB



White  
CSSPRW



Red  
CSSPRR



Yellow  
CSSPRY

### Specification Instructions

Copy the prewritten specification below and update all sections in brackets to create your project specification.

#### Description

Clearview Tactile Ground Indicator Studs in code: [add code here](#) (316 Grade Stainless Steel). To be installed to the manufacturer's instructions in accordance to the AS/NZS 1428.14.2009

#### Manufacturer

Clearview Tactiles  
P: 1300 884 948  
E: [sales@clearviewtactiles.com.au](mailto:sales@clearviewtactiles.com.au)  
W: [www.clearviewtactiles.com.au](http://www.clearviewtactiles.com.au)



[www.clearviewtactiles.com.au](http://www.clearviewtactiles.com.au)

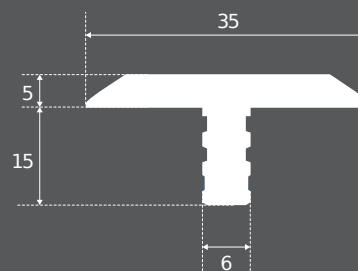


[sales@clearviewtactiles.com.au](mailto:sales@clearviewtactiles.com.au)



1300 884 948

### Profile



### Installation Guide

