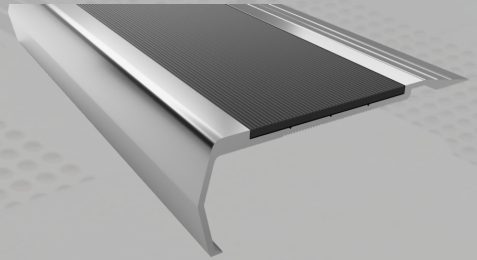




# ClearTread Stair Nosing

## Rubber Insert Series (50TP35)

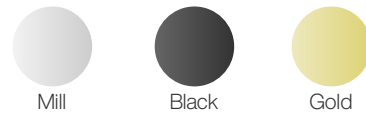
ClearTread quality aluminium stair nosings are specially designed manufactured with durable material which is ideal for use on exposed stair ways and high traffic areas. Used for airports, educational institutes, health care, shopping plazas and public domains, our wide range of nosings offer a solution for every requirement.



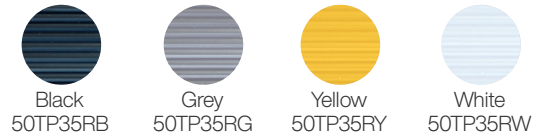
| Specifications     |                              |
|--------------------|------------------------------|
| Product            | ClearTread Rubber Insert     |
| Product Code       | 50TP35                       |
| Profile Material   | Alloy: 6060, Temper: T5      |
| Insert Material    | Thermo Plastic               |
| Overall Dimensions | 85mm x 35mm                  |
| Warranty           | 4 Years                      |
| Slip Rating        | P4                           |
| Compliance Code    | AS/NZS 1428.4:2009, BCA 2014 |
| Fixing Method      | Various                      |

### Standard Finishes & Inserts

#### Profile Finish



#### Insert Finish



### Specification Instructions

Copy the prewritten specification below and update all sections in brackets to create your project specification.

#### Description

Clearview stair nosing profile in code: ['add insert code here'](#)  
Finish: ['add Finish Code here'](#)  
To be installed to manufacturers instructions in accordance to the AS/NZS 1428.14:2009

#### Manufacturer

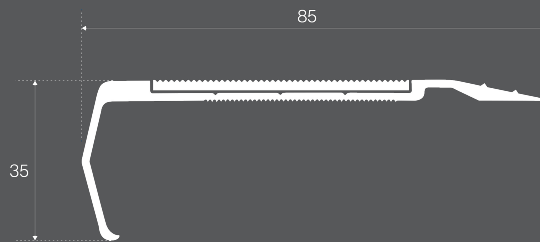
Clearview Tactiles  
P: 1300 884 948  
E: [sales@clearviewtactiles.com.au](mailto:sales@clearviewtactiles.com.au)

1300 884 948

[www.clearviewtactiles.com.au](http://www.clearviewtactiles.com.au)

[sales@clearviewtactiles.com.au](mailto:sales@clearviewtactiles.com.au)

### Profile



### Installation Guide

