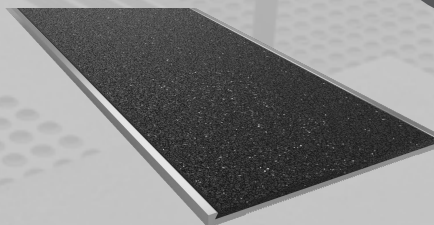


ClearTread Stair Nosing

Abrasive Inlay Series (1CTI)

ClearTread quality aluminium stair nosings are specially designed manufactured with durable material which is ideal for use on exposed stair ways and high traffic areas. Used for airports, educational institutes, health care, shopping plazas and public domains, our wide range of nosings offer a solution for every requirement.



Specifications

| | |
|--------------------|--|
| Product | ClearTread Abrasive Inlay |
| Product Code | 1CTI |
| Profile Material | Alloy: 6060, Temper: T5 |
| Insert Material | Abrasive Tape - Heavy Duty, External Grade |
| Overall Dimensions | 55mm x 2.6mm |
| Warranty | 4 Years |
| Slip Rating | P5 |
| Compliance Code | AS/NZS 1428.4.1:2009, BCA 2014 |
| Fixing Method | Glue Fixed |

Standard Finishes & Inserts

Profile Finish



Mill



Black



Gold

Insert Finish



Black
1CTIB



Grey
1CTIG



Yellow
1CTIY

Specification Instructions


Copy the prewritten specification below and update all sections in brackets to create your project specification.

Description

Clearview transition trim profile in code: ['add code here'](#)
Finish: ['add finish code here'](#)
to be installed to manufacturers instructions in accordance to AS/NZS 1428.4:2009.

Manufacturer

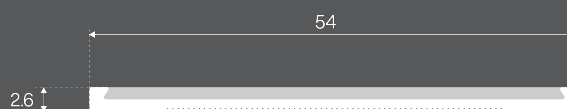
Clearview Tactiles
P: 1300 884 948
E: sales@clearviewtactiles.com.au

 1300 884 948

 www.clearviewtactiles.com.au

 sales@clearviewtactiles.com.au

Profile



Installation Guide

