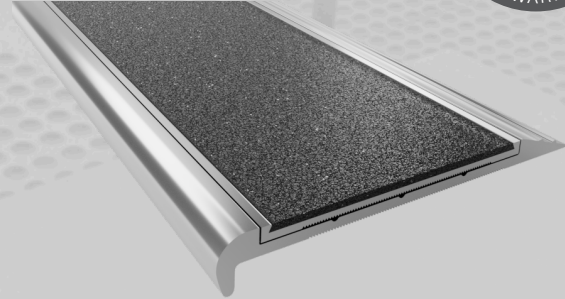


ClearTread Stair Nosing Abrasive Series (1CT1075)

ClearTread quality aluminium stair nosings are specially designed manufactured with durable material which is ideal for use on exposed stair ways and high traffic areas. Used for airports, educational institutes, health care, shopping plazas and public domains, our wide range of nosings offer a solution for every requirement.



| Specifications | |
|--------------------|--|
| Product | ClearTread Abrasive Series |
| Product Code | 1CT1075 |
| Profile Material | Alloy: 6060, Temper: T5 |
| Insert Material | Insert Material Abrasive Insert – Heavy Duty, External Grade |
| Overall Dimensions | 75mm x 10mm |
| Warranty | 4 Years |
| Slip Rating | P5 |
| Compliance Code | AS/NZS 1428.4.1:2009, BCA 2014 |
| Fixing Method | Various |

Standard Finishes & Inserts



Mill



Black



Gold

Insert Finish



Black
1CT1075B



Grey
1CT1075G



White
1CT1075W



Yellow
1CT1075Y

Specification Instructions

Copy the prewritten specification below and update all sections in brackets to create your project specification.

Description

Clearview stair nosing profile in code: 'add code here'
Finish: 'add finish code here'
to be installed to manufacturers instructions in accordance to AS/NZS 1428.14:2009.

Manufacturer

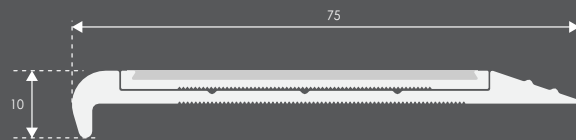
Clearview Tactiles
P: 1300 884 948
E: sales@clearviewtactiles.com.au

1300 884 948

www.clearviewtactiles.com.au

sales@clearviewtactiles.com.au

Profile



Installation Guide

